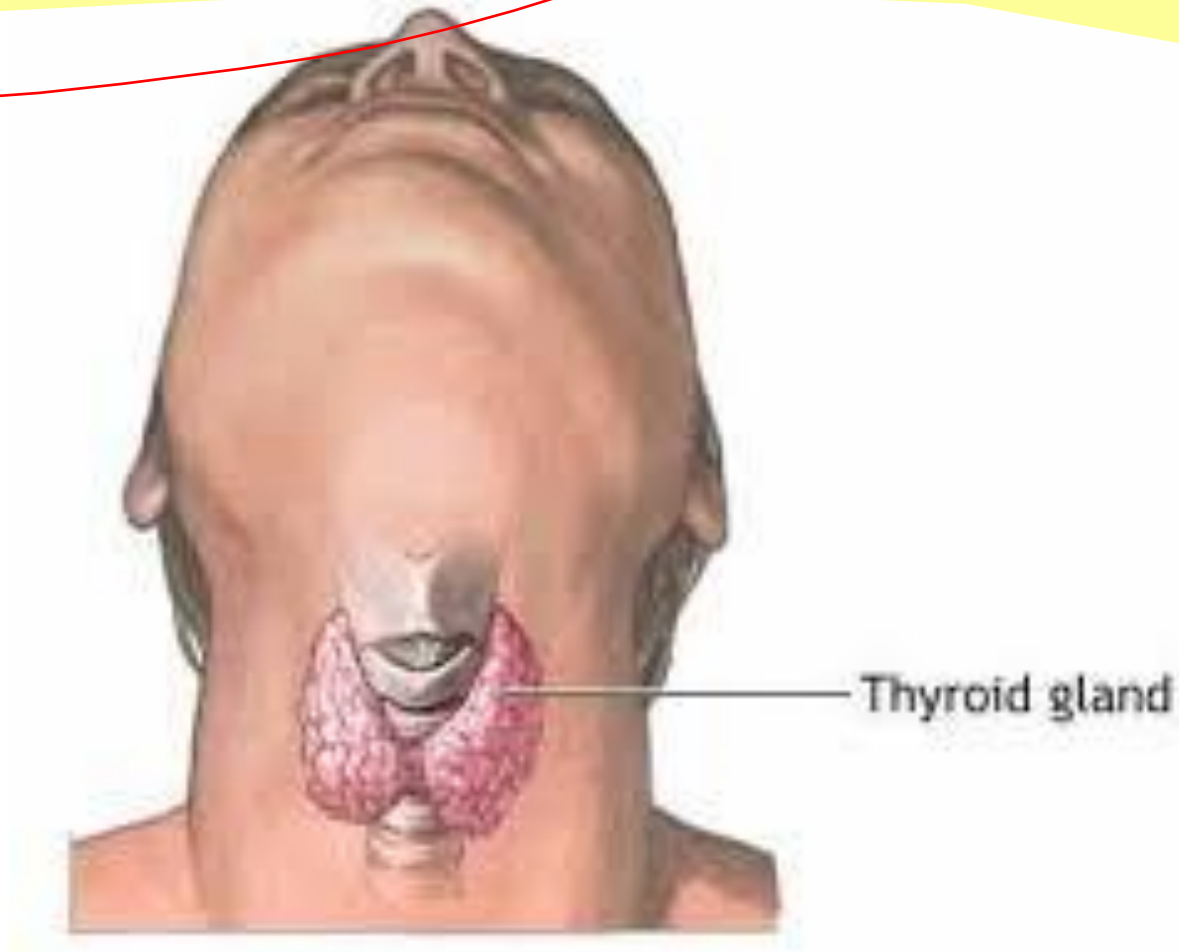
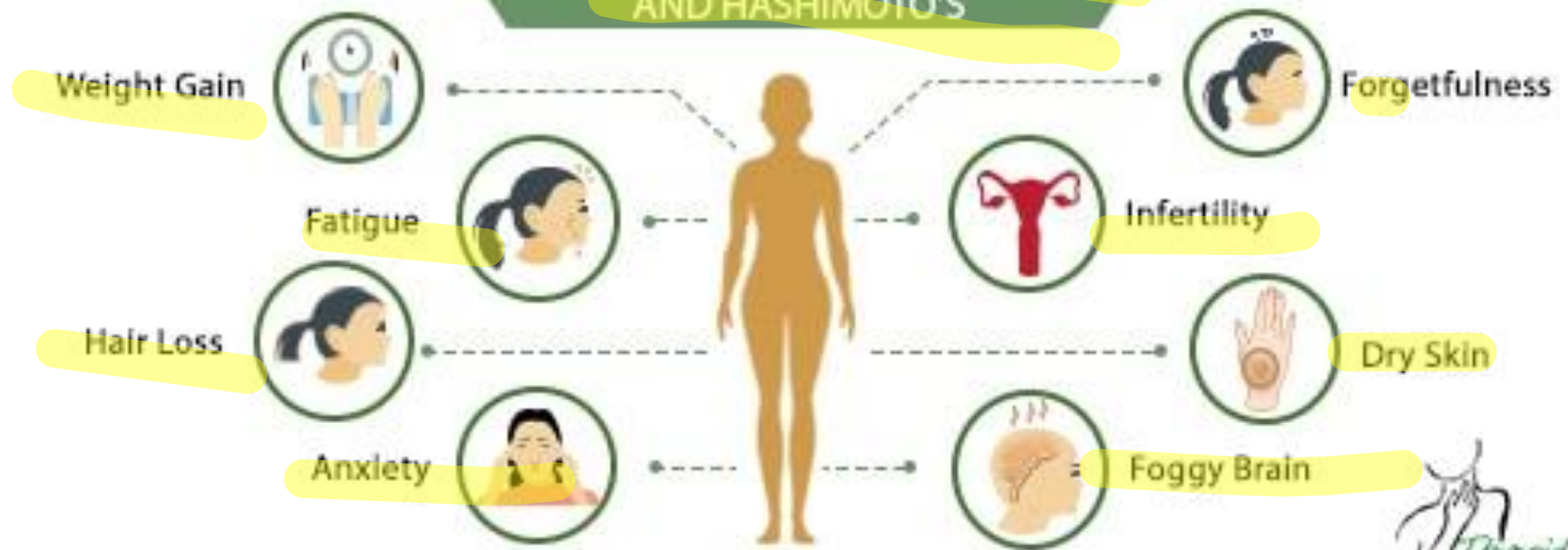


Hypothyroid and Hashimoto's Disease



SYMPTOMS OF HYPOTHYROIDISM AND HASHIMOTO'S



Hashimoto's disease is the most common cause of hypothyroidism in the United States

In the U.S., autoimmune disease accounts for approximately **90 percent** of adult hypothyroidism, due to Hashimoto's"

<https://www.ncbi.nlm.nih.gov/pubmed/3066320>

<http://www.mayoclinic.org/diseases-conditions/hashimotos-disease/basics/definition/con-20030293>

What's Autoimmunity?



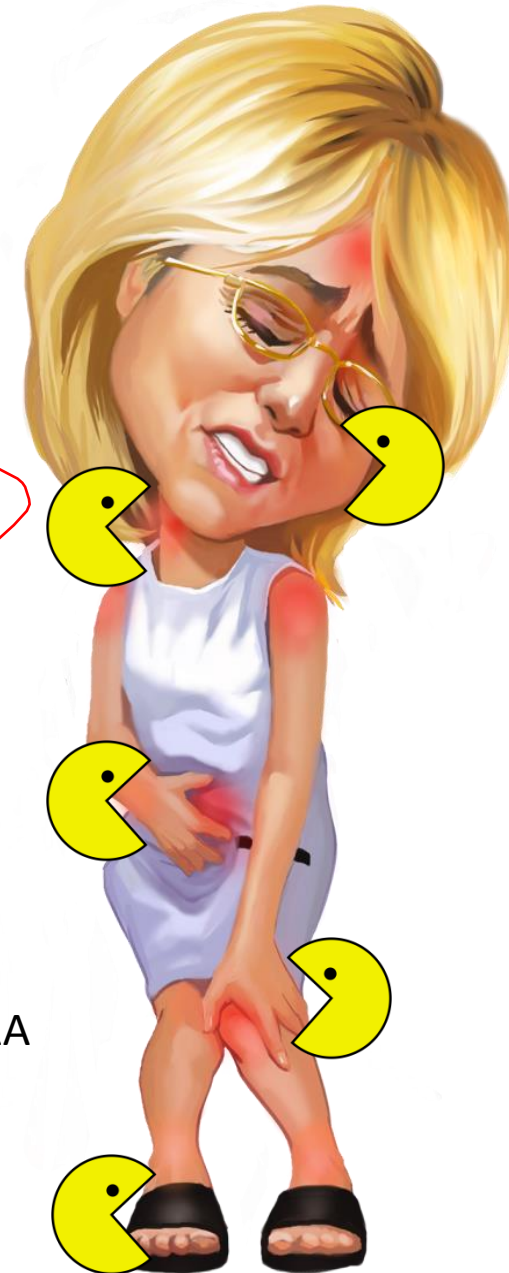
Hashimoto's

Lupus

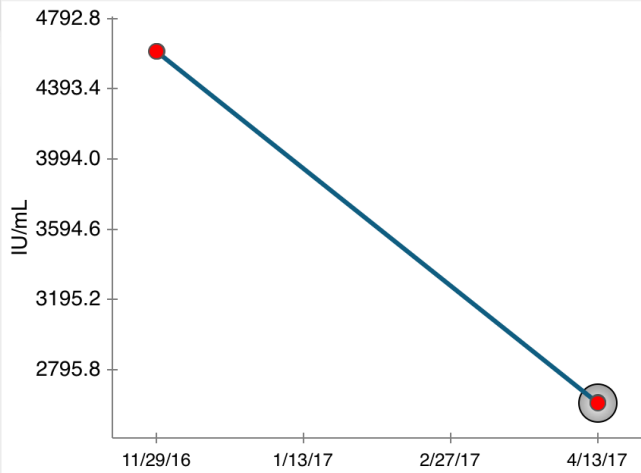
Hashimoto's (thyroid)

IBS, Crohn's

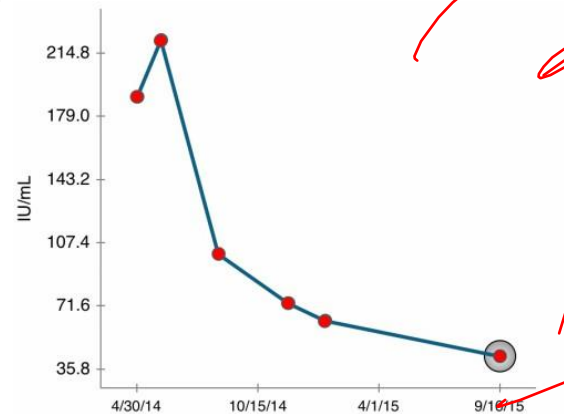
RA



Hashimoto's: When The Thyroid Gland is Under Attack



4/13/17, 9:27 AM 2607 H <9 IU/mL ✓
 11/29/16, 9:05 AM 4604 H <9 IU/mL

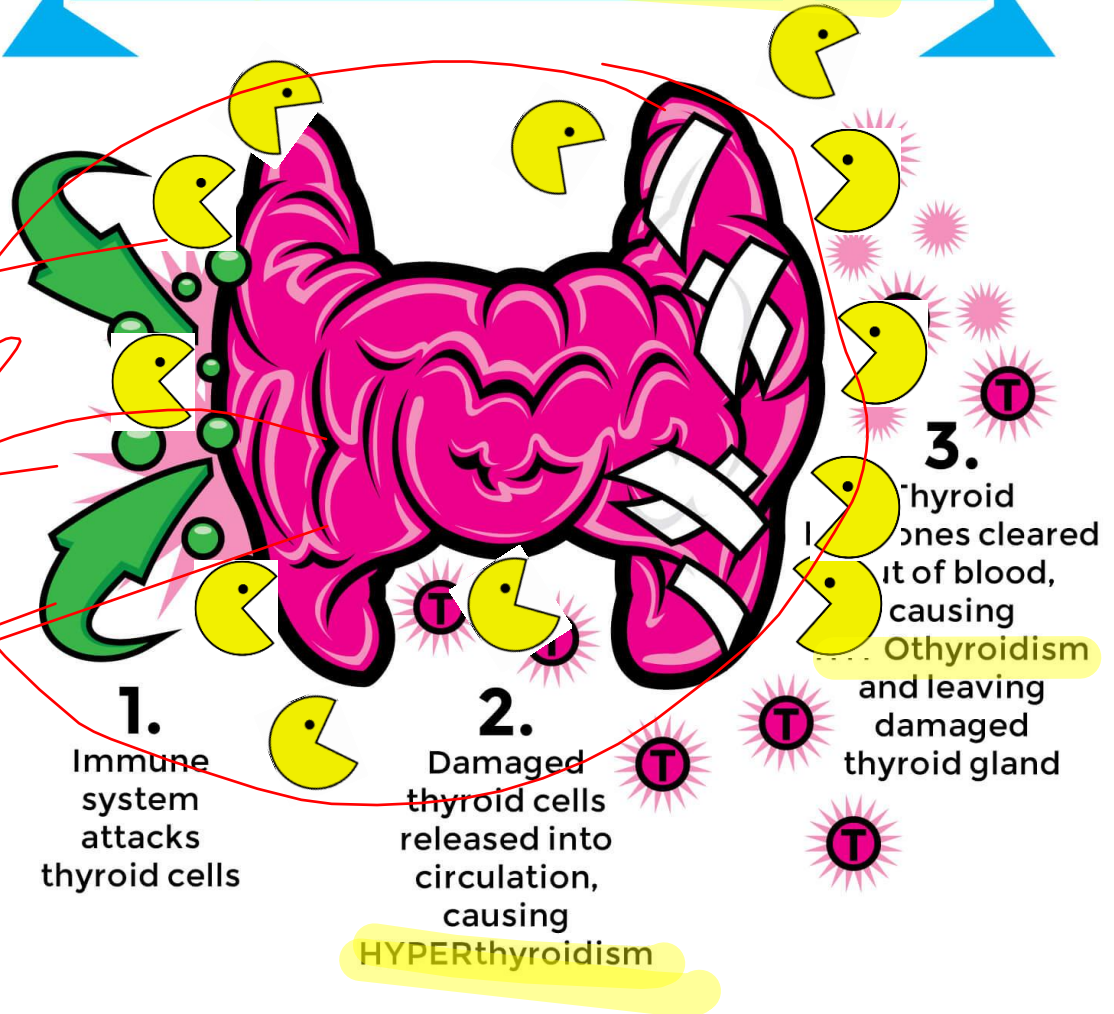


9/16/15, 11:26 AM 43 H <9 IU/mL ✓
 1/16/15, 10:19 AM 63 H <9 IU/mL
 11/26/14, 10:11 AM 73 H <9 IU/mL
 8/21/14, 11:27 AM 101 H <9 IU/mL
 6/2/14, 10:51 AM 222 H <9 IU/mL

**THYROID PEROXIDASE
ANTIBODIES**

>900 H

<9 IU/mL



Handwritten red scribbles and arrows, including the word "THYROID" written vertically.